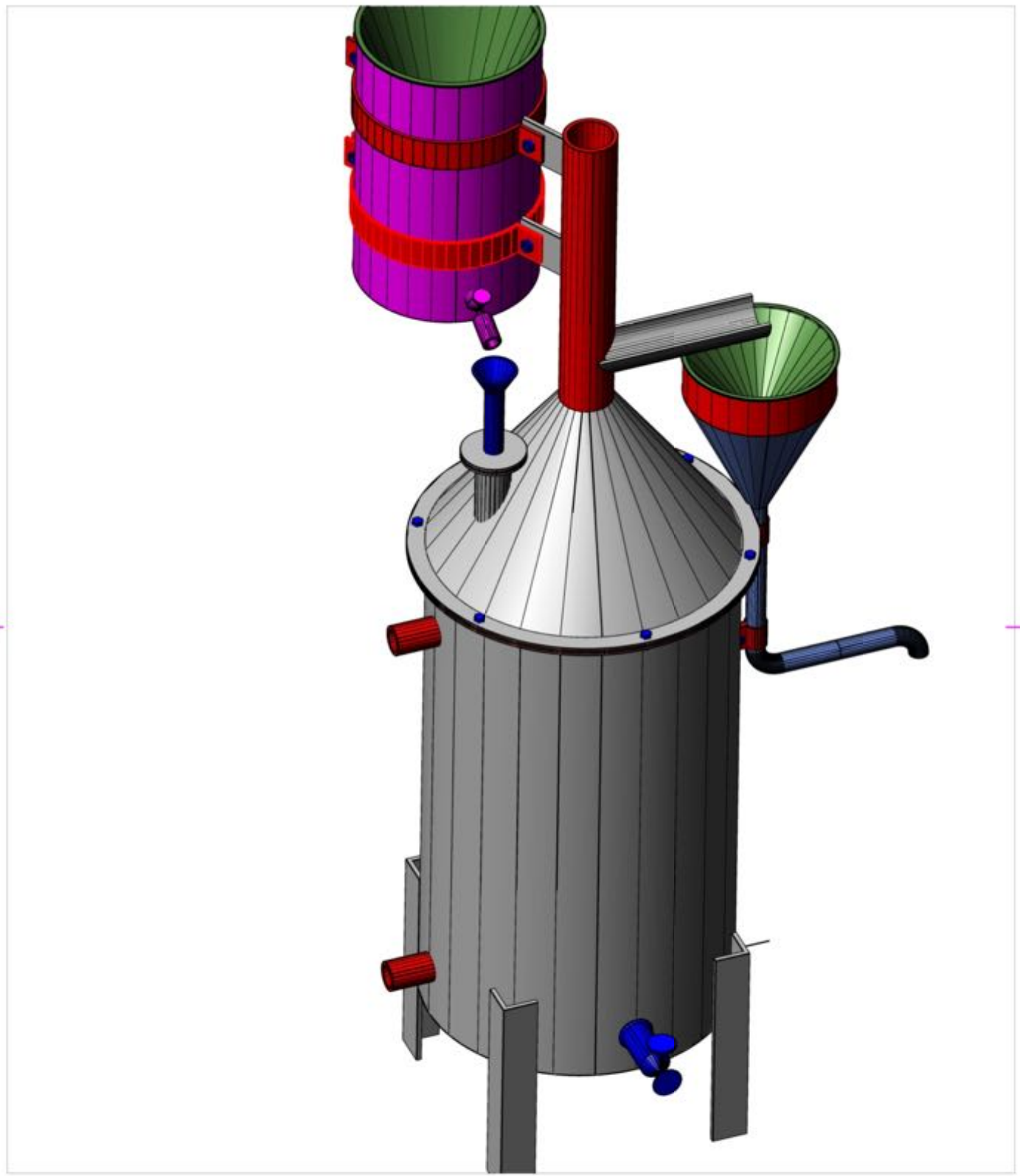





1	N. rev	Nota di revisione	3	Data	Firma	Controllo
1	1	Deleted separate water inlet		22/09/09	A.C.	F.P.

3D VIEW

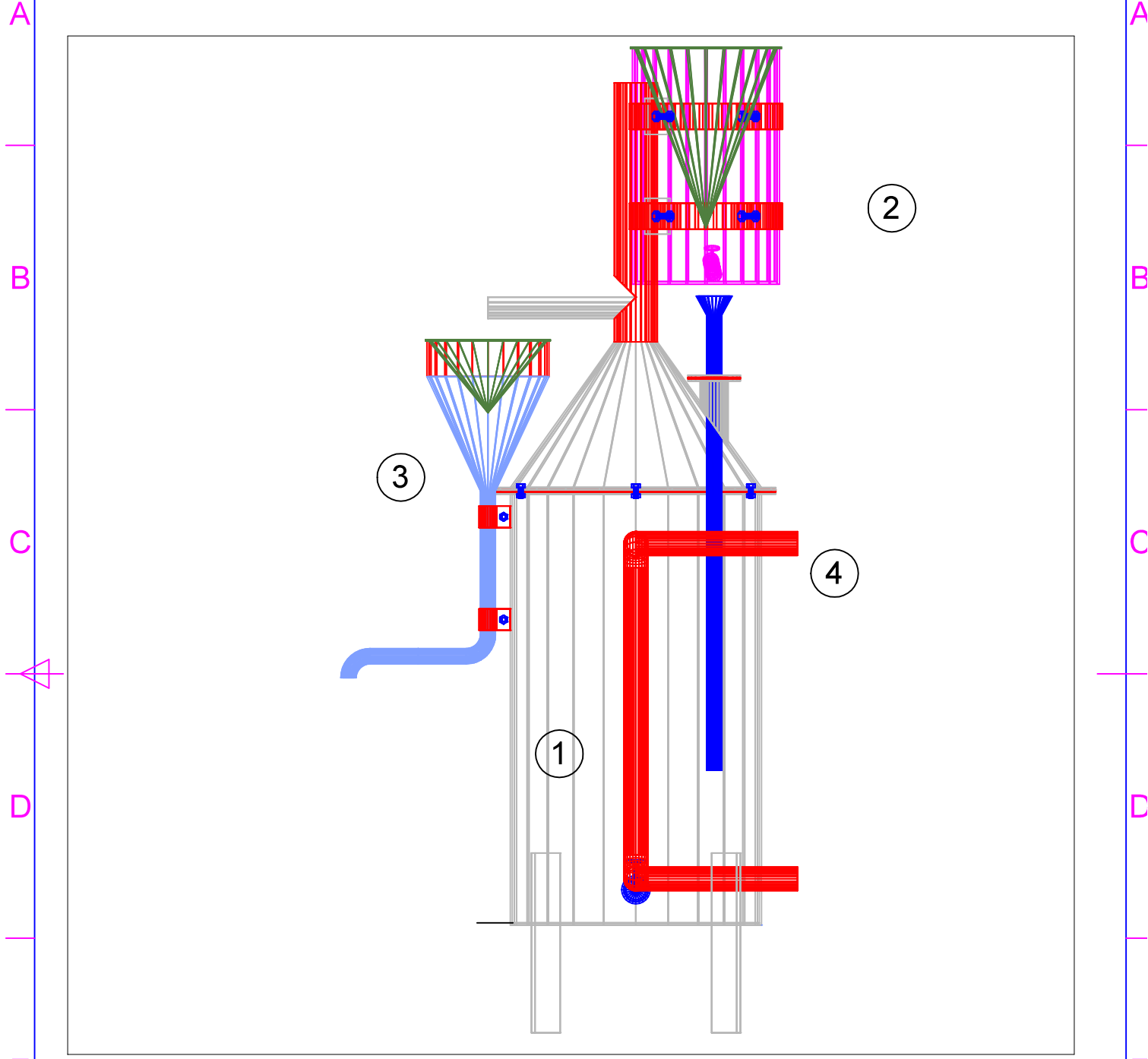


Rif.	Quantità	Titolo/Nome, designazione, materiale, dimensione, ecc.			N. articolo/Riferimento	
Progettato da A. Carrea		Controllato da E. Arato	Approvato da - data Pongiglione - 02/07/08	Nome file Clarifier	Data 02/07/08	Scala N/A

 PS6 ONLUS	 AMIGOS DA GUINE BISSAU	 DICAT UNIGE	CLARIFIER	
			010-1-I-CRF-DGC-A	Modifica 0

1	N. rev	Nota di revisione	2	Data	3	Firma	4	Controllo
1	1	Deleted separate water inlet		22/09/09		A.C.		F.P.

FRONT VIEW



ITEM	QUANTITY	DESCRIPTION	NOTES
1		Clarifier	See sheets 5 and 6
2		Water/oil load	See sheet 7
3		Oil drain	See sheet 8
4		Heating coil	See sheet 9

Rif.	Quantità	Titolo/Nome, designazione, materiale, dimensione, ecc.			N. articolo/Riferimento	
Progettato da A. Carrea	Controllato da E. Arato	Approvato da - data Pongiglione - 02/07/08	Nome file Clarifier	Data 02/07/08	Scala 1:8	

PS76
ONLUS

AMIGOS
DA GUINE BISSAU

DICAT
UNIGE

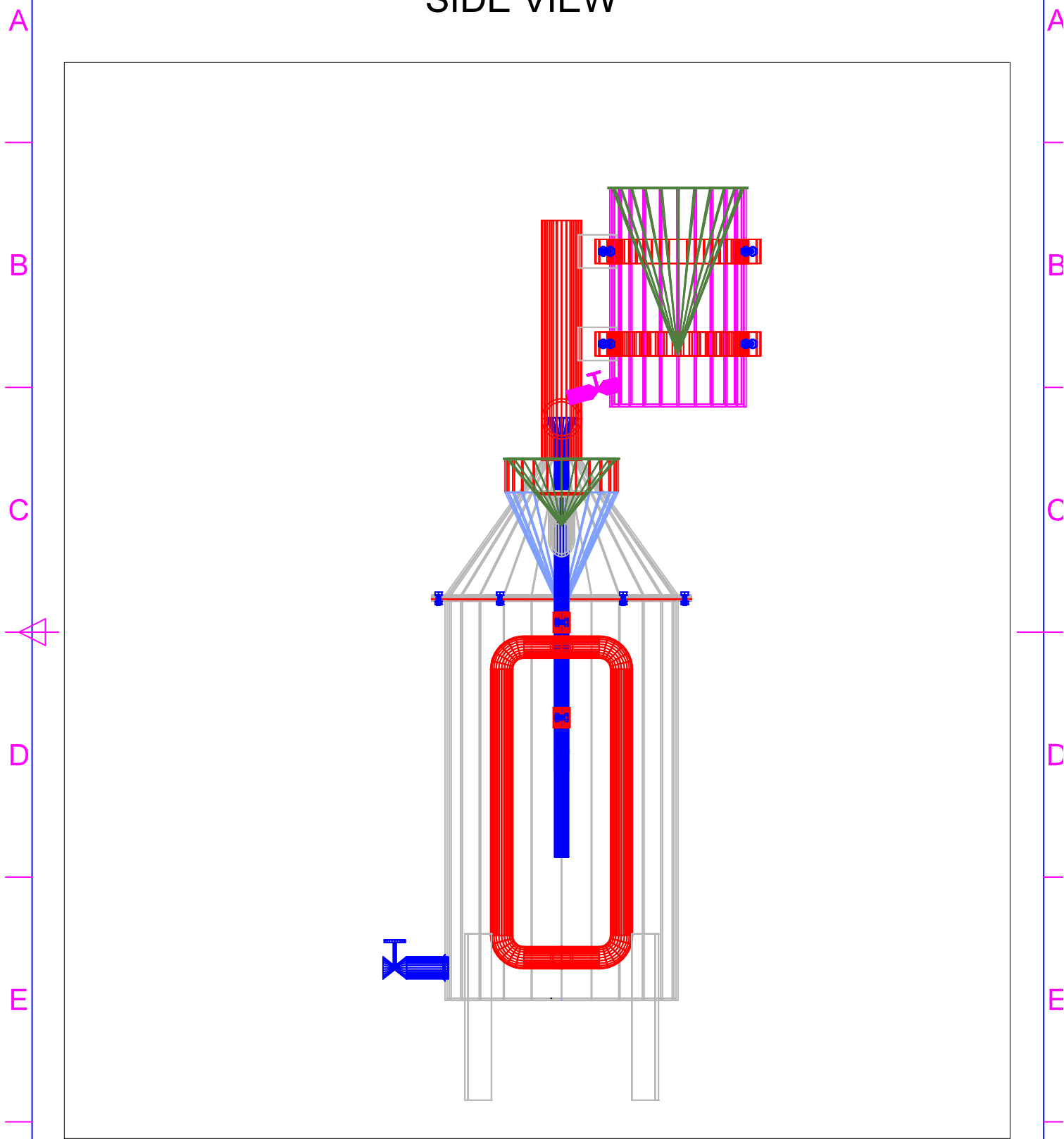
CLARIFIER

010-1-I-CRF-DGC-A


Modifica 0	Foglio 2/10
---------------	----------------

1	N. rev	Nota di revisione	3	Data	Firma	Controllo
1	1	Deleted separate water inlet		22/09/09	A.C.	F.P.


SIDE VIEW



Rif.	Quantità	Titolo/Nome, designazione, materiale, dimensione, ecc.			N. articolo/Riferimento	
Progettato da A. Carrea	Controllato da E. Arato	Approvato da - data Pongiglione - 02/07/08	Nome file Clarifier	Data 02/07/08	Scala 1:8	



PS76
ONLUS



DICAT
UNIGE

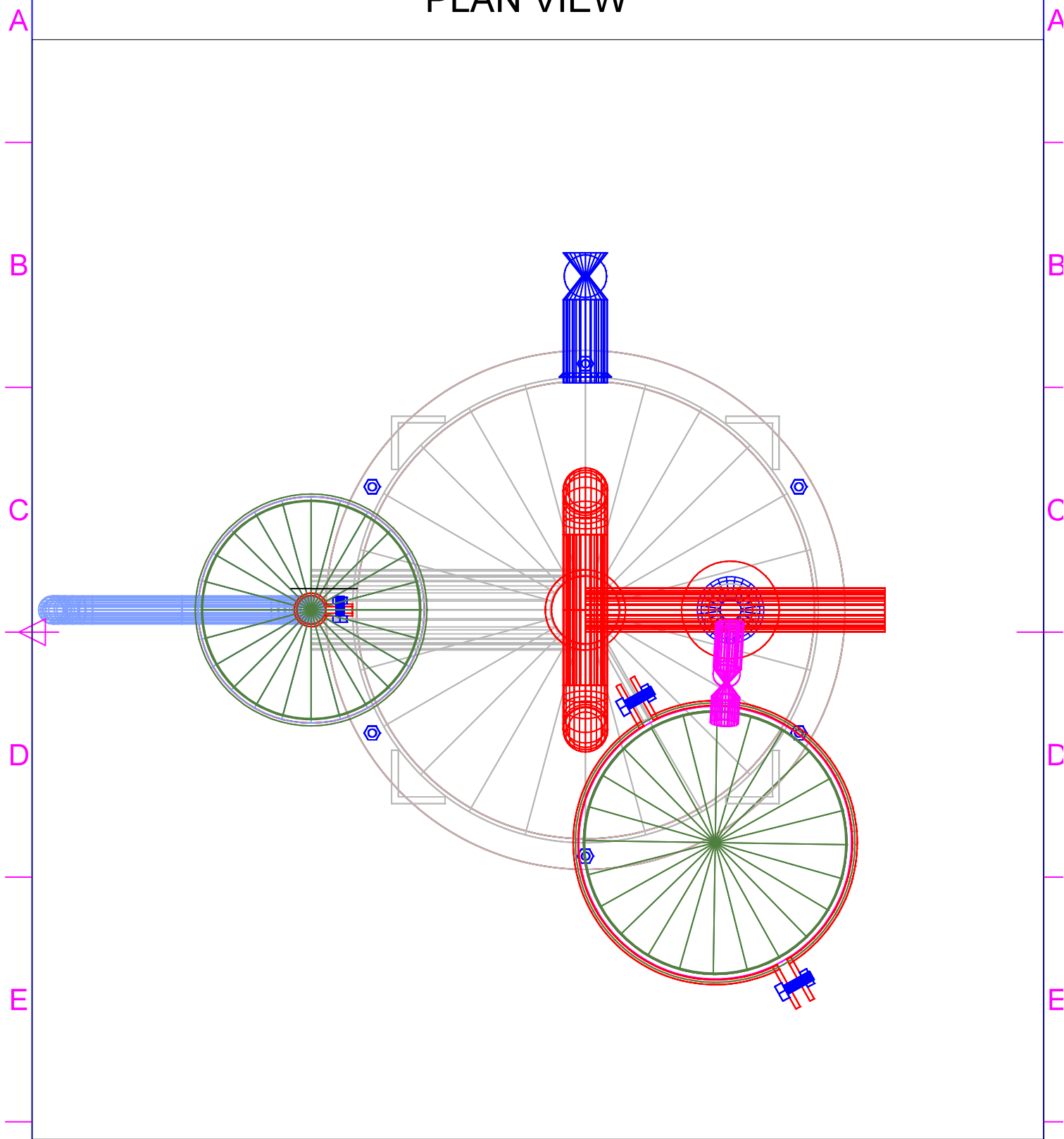
CLARIFIER

010-1-I-CRF-DGC-A




Modifica 0	Foglio 3/10
---------------	----------------

1	N. rev	Nota di revisione	3	Data	Firma	Controllo
1	1	Deleted separate wayer inlet		22/09/09	A.C.	F.P.

PLAN VIEW

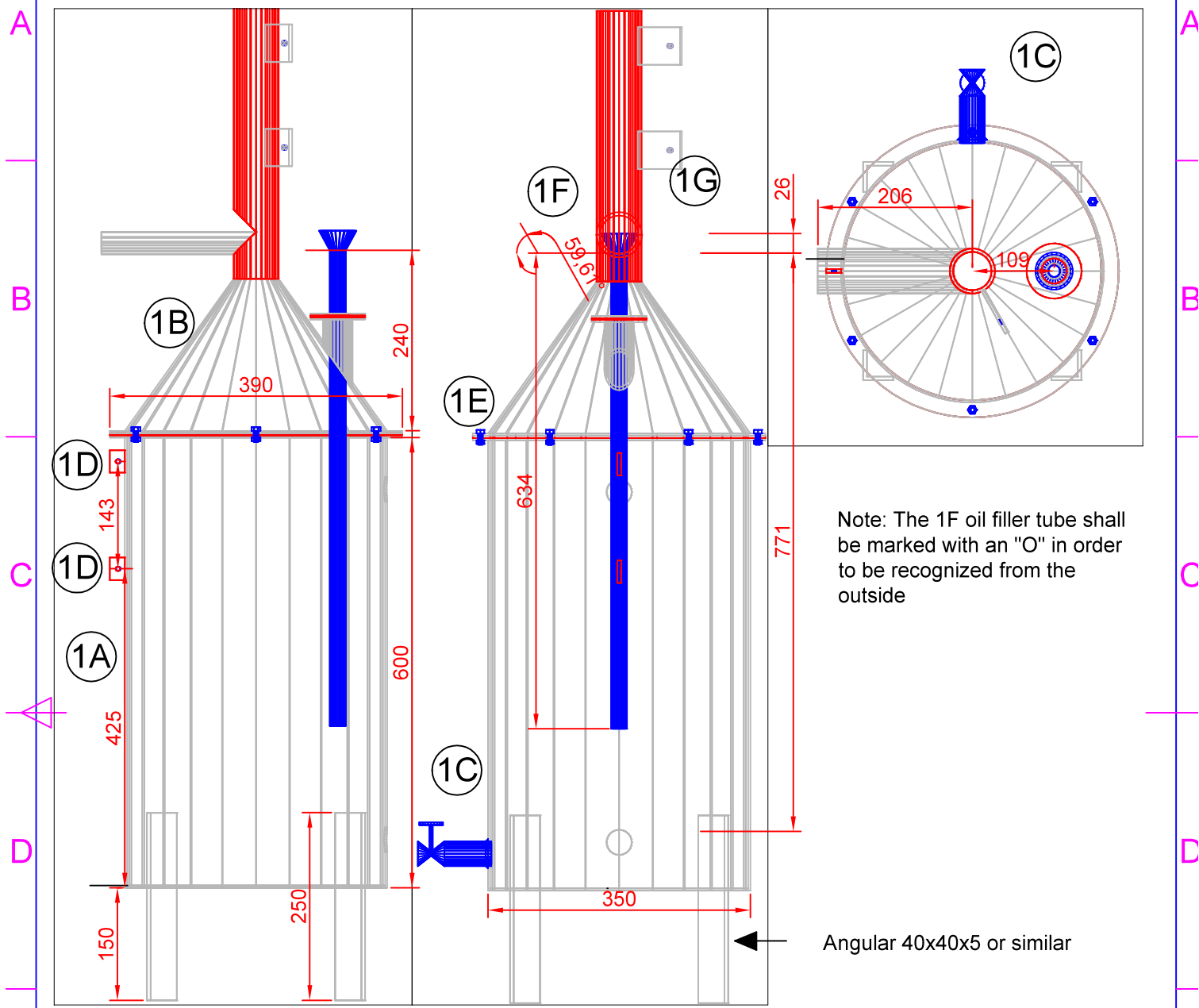


Rif.	Quantità	Titolo/Nome, designazione, materiale, dimensione, ecc.			N. articolo/Riferimento	
Progettato da A. Carrea	Controllato da E. Arato	Approvato da - data Pongiglione - 02/07/08	Nome file Clarifier	Data 02/07/08	Scala 1:4	

 PS76 ONLUS	 AMIGOS DA GUINE BISSAU	 DICAT UNIGE	CLARIFIER	
			010-1-I-CRF-DGC-A	Modifica 0

1	N. rev	Nota di revisione	3	Data	Firma	Controllo
1	Deleted	separate water inlet		22/09/09	A.C.	F.P.

CLARIFIER A



Note: The 1F oil filler tube shall be marked with an "O" in order to be recognized from the outside

Angular 40x40x5 or similar

ITEM	QUANTITY	DESCRIPTION	NOTES
1A	1	Container (sheet metal 2.5 mm)	Carbon steel
1B	1	Cover	See sheet 6
1C	1	Drenaggio	See sheet 6
1D	2	Support sheets (20x30x5)	Carbon steel al
1E	6	M6 bolts	Carbon steel
1F	1	Oil inlet filler tube (1/2")	Carbon steel
1G	1	Water inlet filler tube (1/2")	Carbon steel

Rif.	Quantità	Titolo/Nome, designazione, materiale, dimensione, ecc.			N. articolo/Riferimento	
Progettato da A. Carrea	Controllato da E. Arato	Approvato da - data Pongiglione - 02/07/08	Nome file Clarifier	Data 02/07/08	Scala 1:8	

PS76
ONLUS

AMIGOS DA GUINE BISSAU

DICAT
UNIGE

CLARIFIER

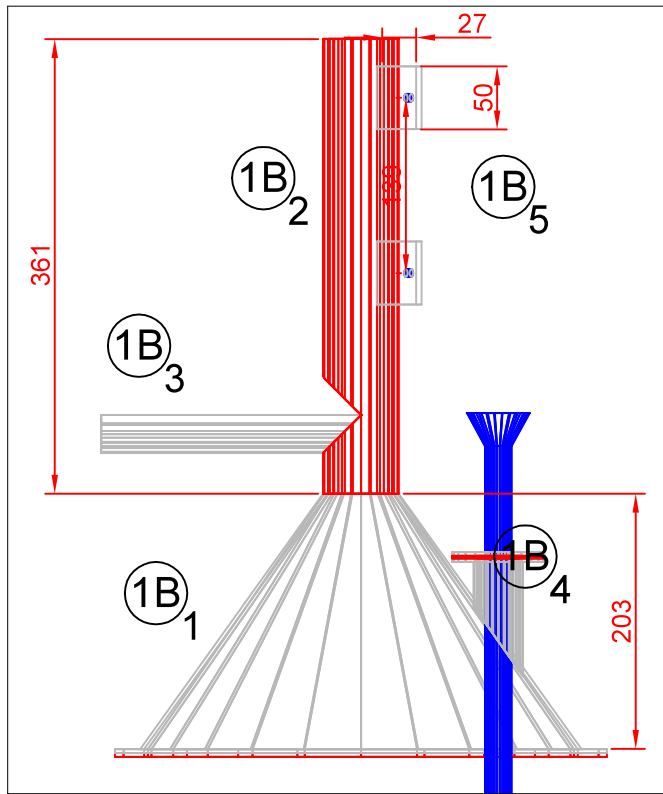
010-1-I-CRF-DGC-A

Modifica
0

Foglio
5/10

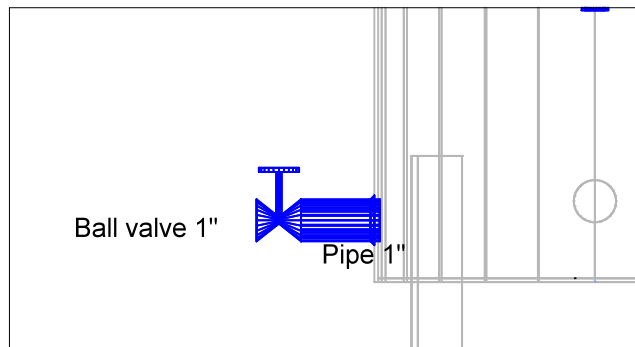
1	2	3	4
N. rev	Nota di revisione	Data	Firma
1	Separate water inlet deleted	22/09/09	A.C.
		Controllo	F.P.

CLARIFIER B



Note: before tightening the connecting bolts between the container and its conical lid, both parts in contact must be sealed with a sealant. The paste is not represented on the drawings, it is the one used in car or truck repair shops for seal the engine head

ITEM	QUANTITY	DESCRIPTION	NOTES
1B1	1	Closing cone (sheet 2.5 mm)	Carbon steel
1B2	1	Pipe 2"	Carbon steel
1B3	1	Oil discharge spout	Carbon steel
1B4	1	Socket 1" for charging pipe	Carbon steel
1B5	2	Support metal sheets	Carbon steel



Rif.	Quantità	Titolo/Nome, designazione, materiale, dimensione, ecc.		N. articolo/Riferimento	
Progettato da A. Carrea	Controllato da E. Arato	Approvato da - data Pongiglione - 02/07/08	Nome file Clarifier	Data 02/07/08	Scala 1:6



PS76
ONLUS



DICAT
UNIGE

CLARIFIER

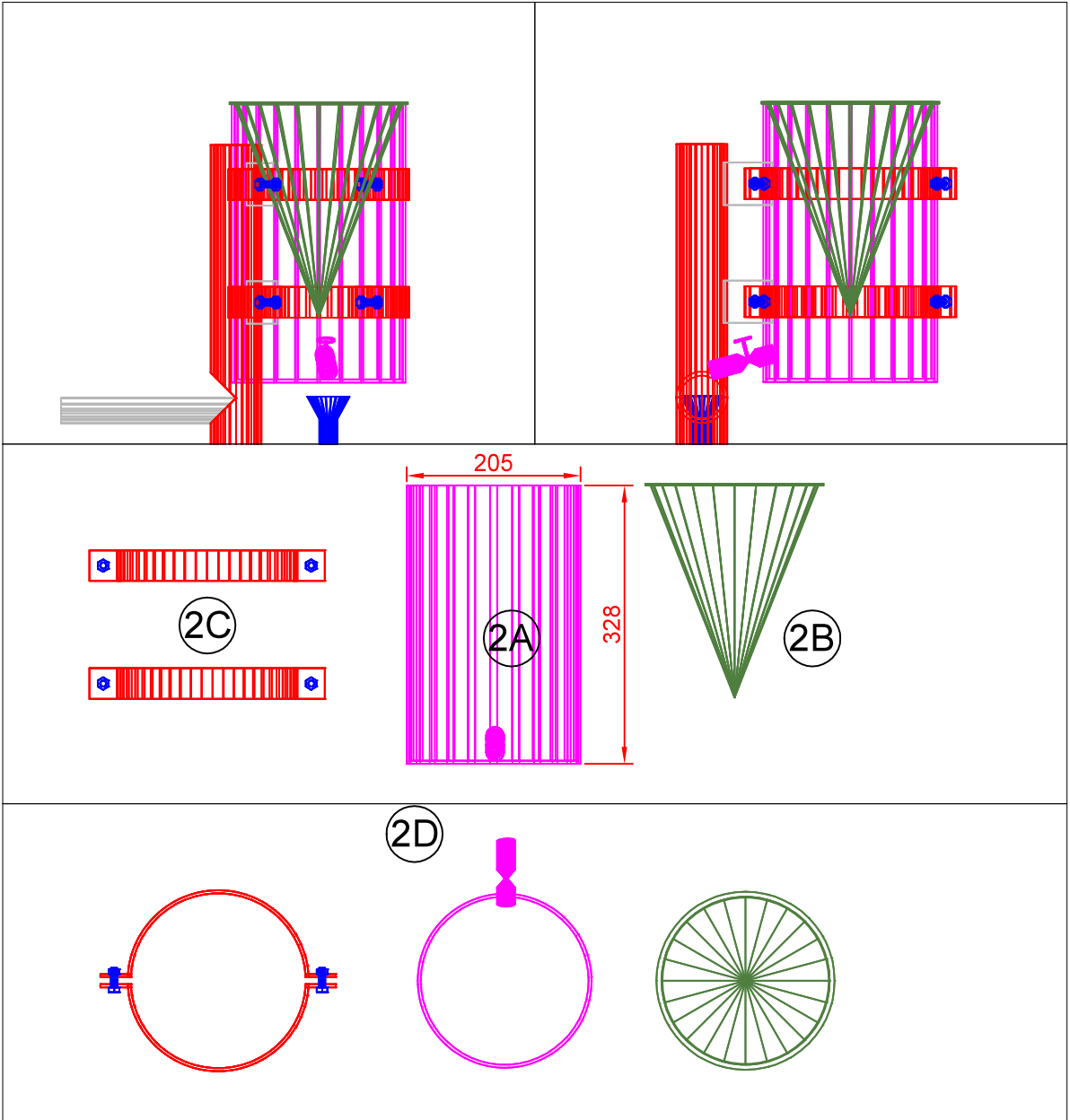
010-1-I-CRF-DGC-A

Modifica
0

Foglio
6/10

1	N. rev	Nota di revisione	3	Data	Firma	Controllo
1	1	Separate water inlet deleted		22/09/09	A.C.	F.P.

WATER/OIL LOAD



ITEM	QUANTITY	DESCRIPTION	NOTE
2A	1	Water/oil container	Sheet metal c.steel 2.5mm
2B	1	35 mesh filter	Carbon steel
2C	2	Support straps	Carbon steel
2D	1	1/2" pipe with ball valve (full bore valve)	Carbon steel

Rif.	Quantità	Titolo/Nome, designazione, materiale, dimensione, ecc.			N. articolo/Riferimento	
Progettato da A. Carrea	Controllato da E. Arato	Approvato da - data Pongiglione - 02/07/08	Nome file Clarifier	Data 02/07/08	Scala 1:8	

PS76
ONLUS

AMIGOS DA GUINE BISSAU

DICAT
UNIGE

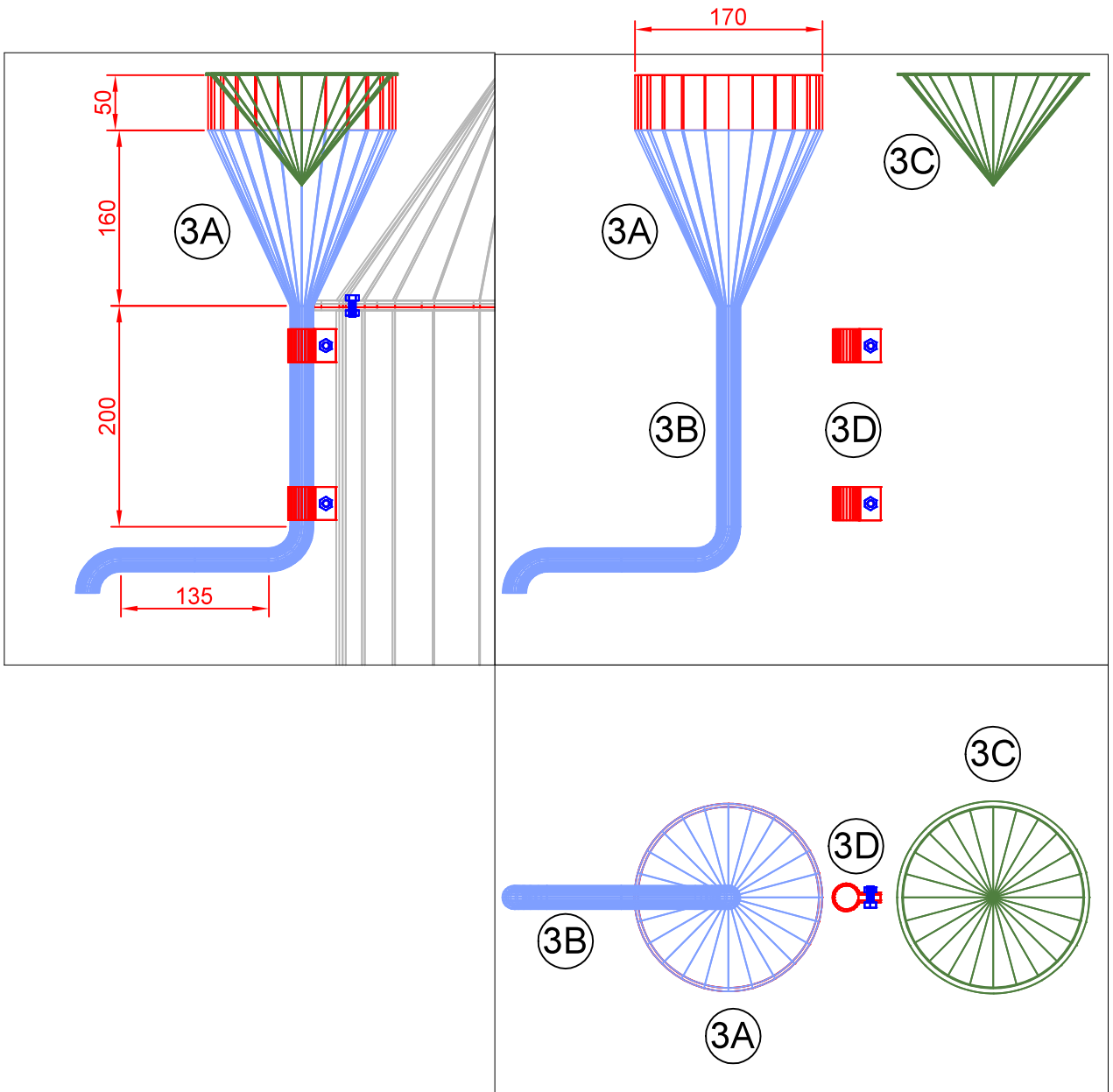
CLARIFIER

010-1-I-CRF-DGC-A

Modifica 0	Foglio 7/10
---------------	----------------

1	N. rev	Nota di revisione	3	Data	Firma	Controllo
1	1	eparate water inlet deleted		22/09/09	A.C.	F.P.

OIL DRAIN



ITEM	QUANTITY	DESCRIPTION	NOTE
3A	1	Collection funnel	Sheet metal C.steel 2.5 mm
3B	1	Drain pipe 1/2"	Carbon steel
3C	1	Filter 40 micron mesh	Stainless steel
3D	2	Support straps	Carbon steel

Rif.	Quantità	Titolo/Nome, designazione, materiale, dimensione, ecc.			N. articolo/Riferimento	
Progettato da A. Carrea	Controllato da E. Arato	Approvato da - data Pongiglione - 02/07/08	Nome file Clarifier	Data 02/07/08	Scala 1:6	

PS76
ONLUS

AMIGOS DA GUINE BISSAU

DICAT
UNIGE

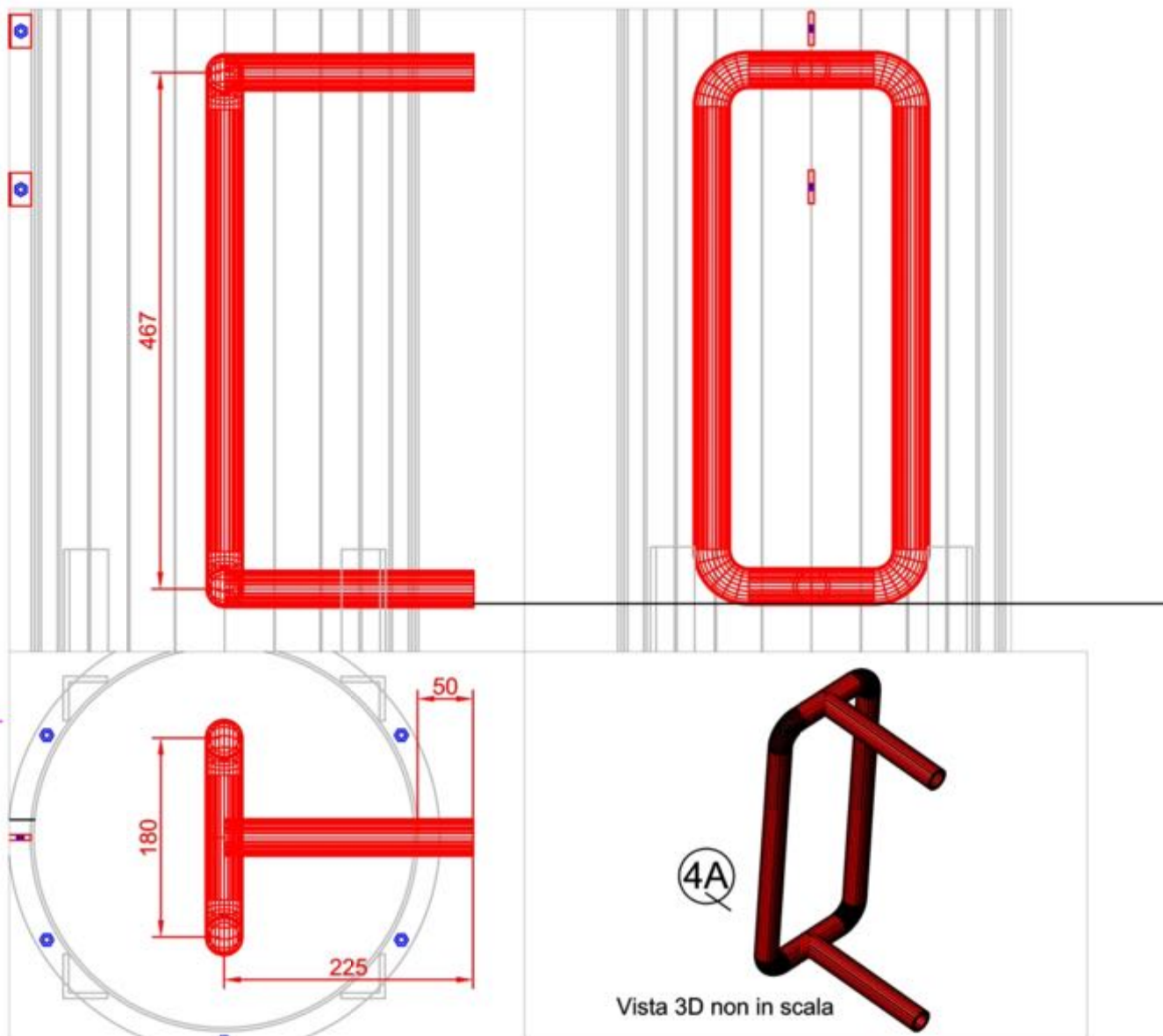
CLARIFIER

010-1-I-CRF-DGC-A

Modifica 0	Foglio 8/10
---------------	----------------

1	N. rev	Nota di revisione	2	3	4	
1		Separate water inlet deleted		Data	Firma	Controllo
				22/09/09	A.C.	F.P.

HEATING COIL






ITEM	QUANTITY	DESCRIPTION	NOTES
4A	1	Pipe1"	Carbon steel

Rif.	Quantità	Titolo/Nome, designazione, materiale, dimensione, ecc.			N. articolo/Riferimento	
Progettato da A. Carrea	Controllato da E. Arato	Approvato da - data Pongiglione - 02/07/08	Nome file Clarifier	Data 02/07/08	Scala 1:6	
	PS76 ONLUS			CLARIFIER		
				010-1-I-CRF-DGC-A	Modifica 0	Foglio 9/10

N. rev	Nota di revisione	Data	Firma	Controllo
1	Eliminato ingresso separato acqua	22/09/09	A.C.	F.P.

NOTE

1. The dimensions not indicated can be obtained from the scale used in the single sheets. However, they are indicative and can be changed by the manufacturer to make construction easier, while respecting the functionality of the component. If in doubt, report to PS76
 2. All joints where bolts are not indicated are intended as welded.
1. Operating phases: A) initial filling with water (30 litres) until the dip tube is submerged by about 100 mm
 B) subsequent introduction of palm oil (all the crude oil from pressing)
 C) Final filling with water up to complete displacement of the oil.

Rif.	Quantità	Titolo/Nome, designazione, materiale, dimensione, ecc.			N. articolo/Riferimento	
Progettato da A. Carrea	Controllato da E. Arato	Approvato da - data Pongiglione - 02/07/08	Nome file Clarifier	Data 02/07/08	Scala 1:6	
 PS76 ONLUS		 AMIGOS DA GUINE BISSAU		 DICAT UNIGE		<h1 style="color: magenta;">CLARIFIER</h1>
010-1-I-CRF-DGC-A				Modifica 0	Foglio 10/10	